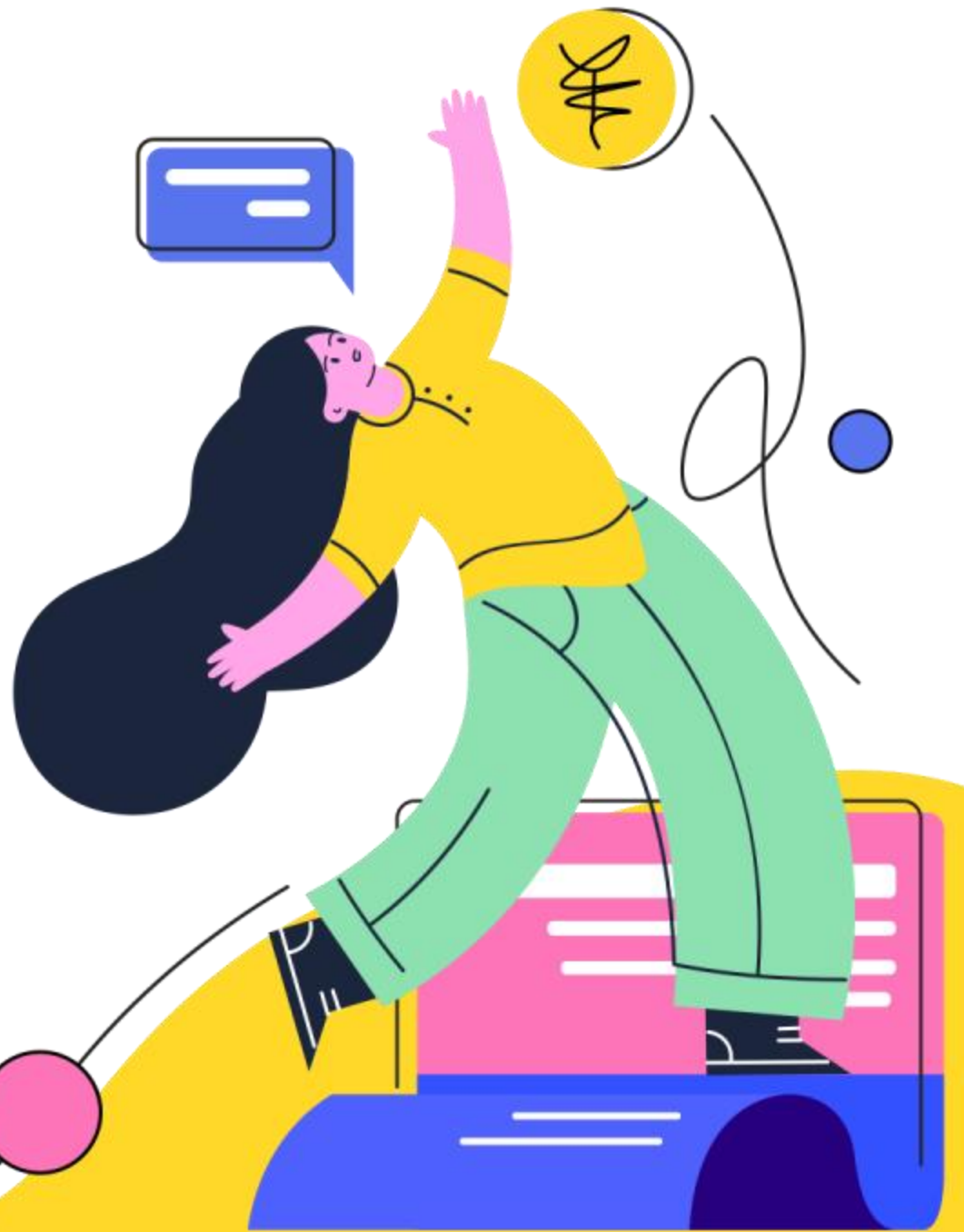




常见纸盒结构设计 Common Folding Carton Structures





前面课程我们学过，折叠纸盒分为：管式折叠纸盒、盘式折叠纸盒、管盘式折叠纸盒等。

In previous courses, we learned that folding cartons can be categorized into tubular folding cartons, tray folding cartons, tubu-tray folding cartons, etc.





“

管式折叠纸盒结构设计 Tubular Folding Carton Structure Design

因开口面较小，形体较高，似管状而得此名。管式的特点是：多为单体结构，展开为一整体。

Named for its small opening and tall, tubular shape. The characteristics of the tubular design are that it is mostly a single-piece structure that unfolds into a single unit.

”

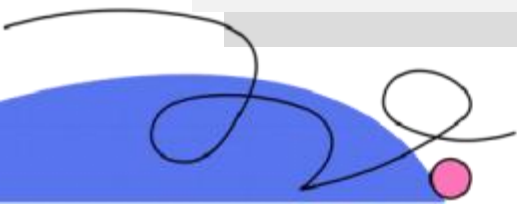


管式折叠纸盒结构设计

Tubular Folding Carton Structure Design

管式折叠纸盒是在纸盒成型过程中，将纸板按设计要求切裁、压痕后，箱体板沿周向依次旋转成型，纵接缝粘合或订合连接，盒盖、盒底用与体板相连的襟片，按一定的结构形式封合的折叠纸盒。

The tubular folding cartons are crafted during the formation process of the carton by cutting and creasing the cardboard according to design specifications. The body panels of the carton are sequentially rotated circumferentially to shape the structure, and the vertical seams are joined by gluing or stapling. The carton's lid and base are attached to the body panels using flaps that are sealed in a specific structural arrangement.





管式折叠纸盒结构设计
Tubular Folding Carton
Structure Design

对于管式折叠纸盒来说，要求盒底在设计时既要保证其强度，又要在其成型时力求简单。

For tubular folding cartons, the bottom must be designed to ensure strength while maintaining simplicity during assembly.



盒底结构有许多种，如插入盖、锁口盖、插锁盖、正掀封口盖、粘合封口盖等也可作盒底使用。

There are various carton bottom structures available, such as tuck-in lids, lock-bottom lids, tuck-lock lids, standard tuck-seal lids, and adhesive-seal lids, all of which can serve as carton bottoms.

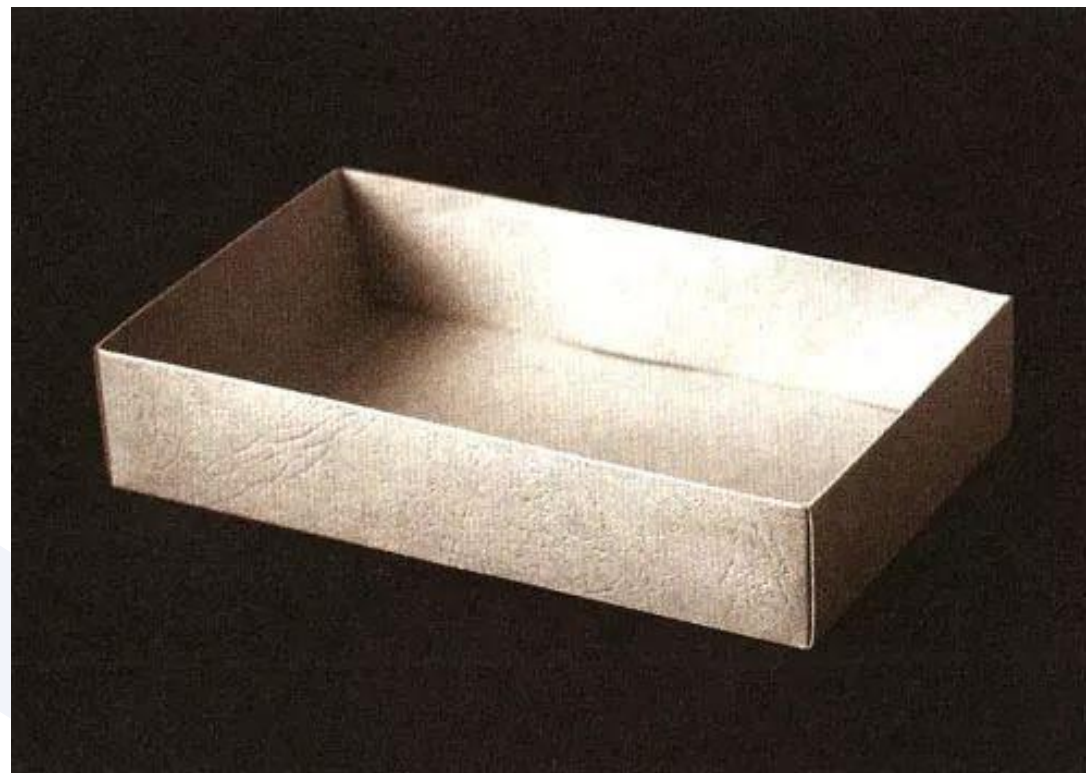




盘式折叠纸盒 Tray Folding Carton

是将纸板按设计要求切裁、压痕，周边体板按一定角度内折后再相互组构而成型的折叠纸盆，有时盒盖是体板延长部分形成的。

Tray folding cartons are made by cutting and scoring the cardboard as per design, then folding the side panels inward at specific angles and interlocking them to form the carton. Sometimes, the lid is formed by extending the side panels.





BUT FIRST, COFFEE.

其用途广泛，食品、杂货、纺织品、成衣、礼品等都可以用此包装。

Tray folding cartons are widely used and can package items such as food, groceries, textiles, clothing, gifts, and more.



盘式折叠纸盒

Tray Folding Carton

它最大的优点是不需要黏合剂，而是用纸盒本身结构上增加切口来进行拴接和锁定而使纸盒成型和封口。

Its greatest advantage is that it does not require adhesives; the carton is formed and sealed by incorporating slits into its structure for interlocking and fastening.

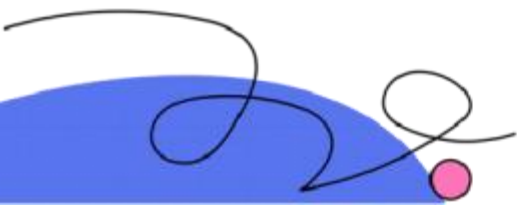
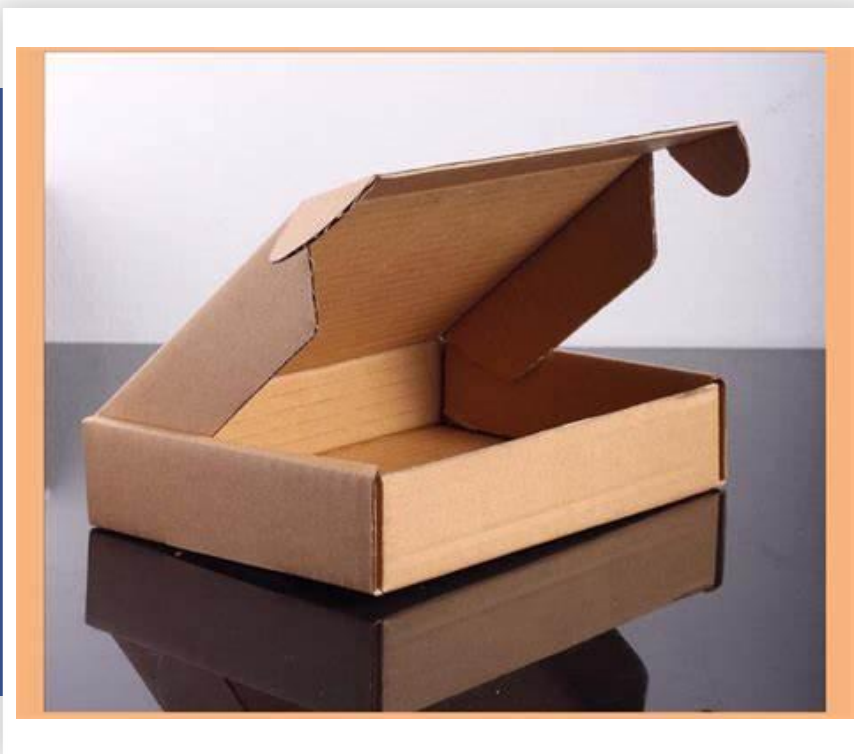




盘式折叠纸盒的一般特征 General Characteristics of Tray Folding Cartons

体板与底板整体相连，底板是纸盒成型后自然构成的，不需要像管式折叠纸盒那样，由底板、襟片组合封底；

The body panel is entirely connected to the bottom panel, and the bottom panel forms naturally after the carton is assembled, unlike tubular folding cartons, where the bottom is formed by combining the bottom panel with flaps.





盘式折叠纸盒的一般特征

General Characteristics of Tray Folding Cartons

盒盖可以是与体板的连体结构、也可以设计独立的盒盖；

The lid can be either an integrated part of the box body or a separate component.

对多数盘式折叠纸盒，盒盖(盒底)相对盒体其它面面积较大，盒底形式单一，基本没有变化；

For most tray folding cartons, the lid (or bottom) has a larger surface area compared to the other sides of the box. The bottom section is typically uniform and shows minimal variation.

各个体板之间需用一定的组织形式连接，才能使纸盒成型；

To shape the carton the individual panels must be connected in an organized manner.

盘式折叠纸盒承重能力较强，主装潢面积大。

Tray folding cartons have a strong load-bearing capacity and a large primary decoration area.



盘式折叠纸盒的盒盖结构可为：

The cover structure of tray folding cartons can be:

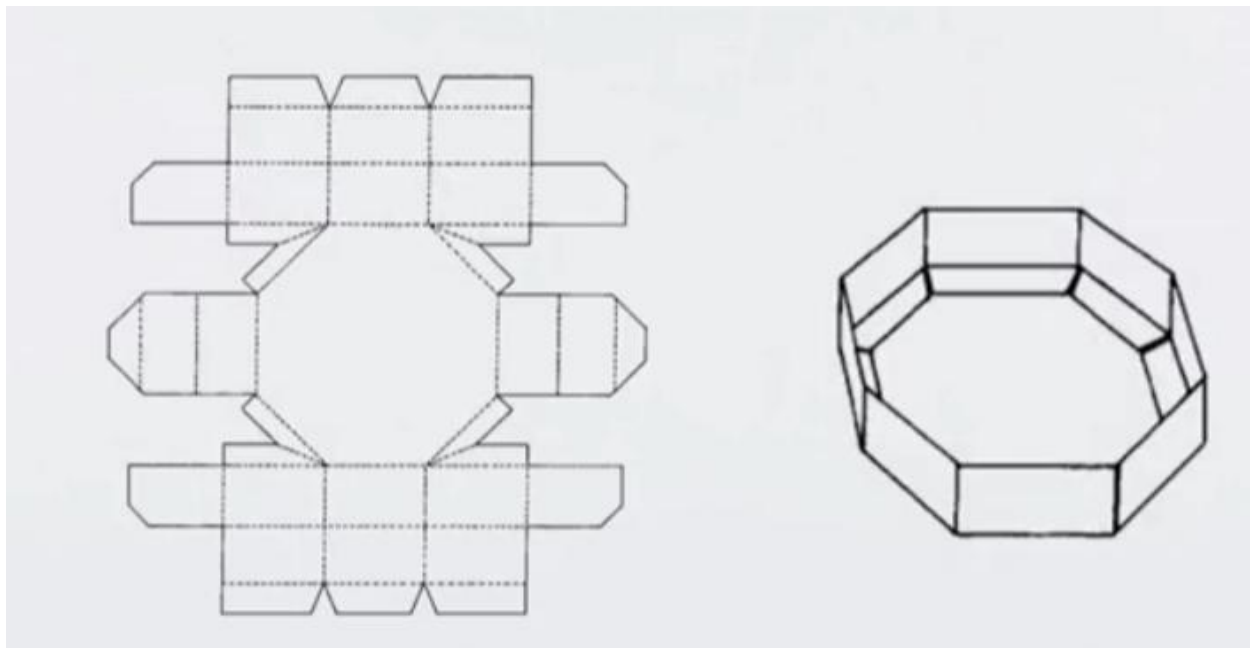
盖罩式、摇盖式、锁口摇盖式、套盖式等结构。

Cover types such as clamshell, flip-top, locking flip-top, and sleeve.





管盘式折叠纸盒 Tube-tray folding carton



1.

在一页纸板成型的条件下，单独采用管式或盘式成型方法均不能使其成型。

Under the condition of forming from a single sheet of cardboard, neither tubular nor plate-forming methods alone can complete the formation.

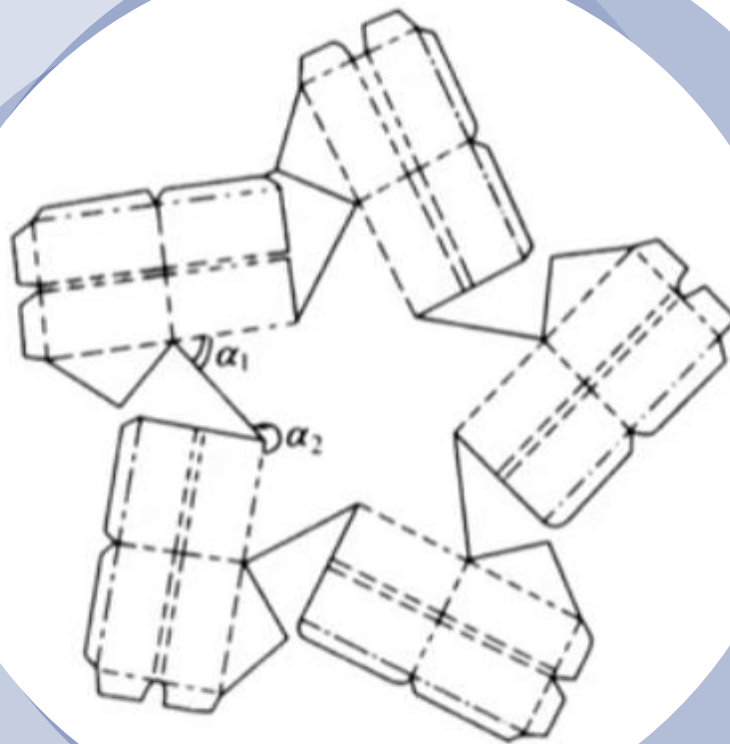
所以可以采用管盘式成型方法，即用管式盒的旋转成型方法来成型盘式盒的部分盒体，这就是管盘式折叠纸盒。

Therefore, the tube-tray folding method can be used to form part of the carton body of the tray carton, that is, the tube-tray folding carton.



如同盘式自动折叠纸盒一样，管盘式折叠纸盒也可以在各体板上设计内折叠角或外折叠角，使之成为自动折叠纸盒。

Similar to the automatic tray folding carton, the tube-tray folding carton can also be designed with internal or external folding angles on each body plate to make it an automatic folding carton.





感谢各位的观看
Thank you for
watching.

