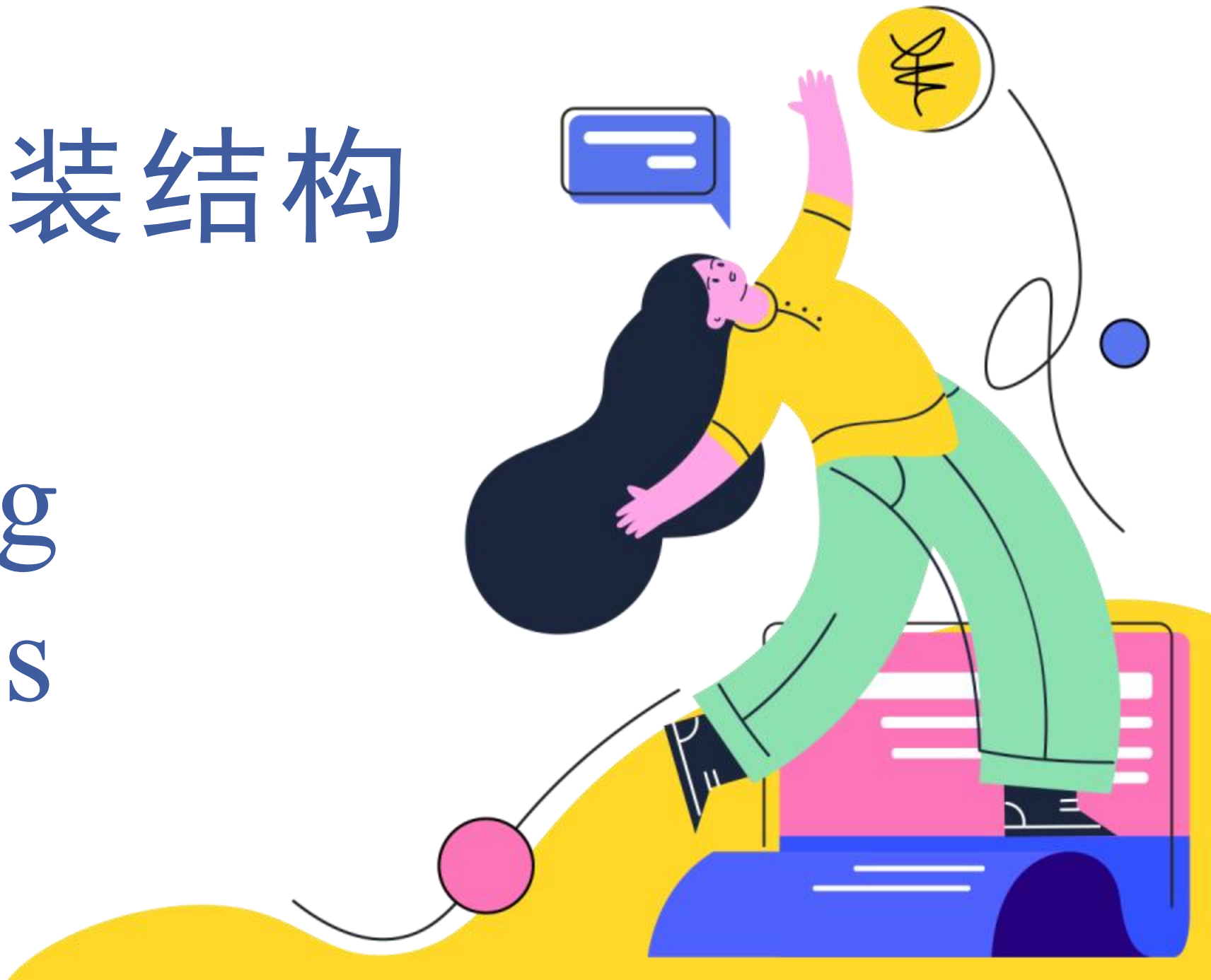




常见的包装结构

Common Packaging Structures





常见的包装结构主要有：盒箱式结构、罐（桶）式结构、瓶式结构、袋式结构、盘式结构、套式结构、管式结构、篮式结构等等。

The common packaging structures mainly include: box type, can (barrel) type, bottle type, bag type, tray type, sleeve type, tube type, basket type, and so on.

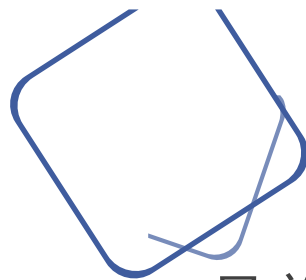


1、盒箱式结构

1. Box Type Structure

盒箱式包装结构是最常见的一种包装结构，根据其材料及制作工艺的不同可以有无数种形态的盒箱式结构，盒箱式包装结构的结构简单，且盛装效力高。

The box type packaging structure is the most common. Depending on the materials and manufacturing process, it can take countless forms. Box type packaging is simple in structure and highly effective for containing items.



目前已成为主流的包装结构了，多用于包装固体状态的商品，既利于保护商品，也利于堆放、运输和悬挂。

It has become the mainstream packaging structure, widely used for solid goods due to its ability to protect, stack, transport, and hang items efficiently.



2、罐（桶）式结构

2. Can (Barrel) Type Structure

罐（桶）是用金属、纸、塑料、陶瓷等及复合材料制成的，多用于液体或液固体混装的商品。

Cans (barrels) are made from materials such as metal, paper, plastic, ceramics, and composites, and are mainly used for liquid or semi-liquid goods.

其密封性好，利于保鲜，对商品的防护性能好，防水、防潮，耐酸、耐冲击，耐压性能也很好；质量轻，价格低，使用方便。

They offer good sealing, which is beneficial for preservation. They provide excellent protection against water, moisture, acid, impact, and pressure. Additionally, they are lightweight, inexpensive, and convenient to use.





是常见的食品包装，如易拉罐、茶叶罐等。配以喷雾阀结构，可制成各式喷雾罐，被广泛应用于各个领域。

Common examples include food packaging like cans and tea tins. When equipped with a spray valve structure, they can be made into various types of aerosol cans, widely used across different fields.



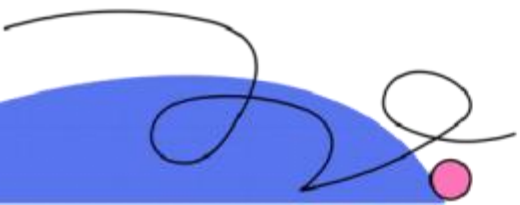


3、瓶式结构

3. Bottle Type Structure

此类包装结构多用于液体商品，通常可用塑料、玻璃、陶瓷等材料制作而成，其特点是密封性比较强、坚固、易加工成各种形状，其中有不少还采用特殊结构。

This type of packaging is mainly used for liquid products. Bottles are usually made from plastic, glass, ceramics, etc. They are characterized by strong sealing, durability, and the ability to be molded into various shapes, with some featuring special designs.





瓶式结构耐水性强且价格低廉，被广泛用于化工、医药、日用品、食品等领域，瓶式包装具有线条流畅、美观实用等优点。

Bottle type structures are highly water-resistant and affordable, making them widely used in the chemical, pharmaceutical, daily necessities, and food industries. They combine aesthetics and practicality with smooth lines and appealing designs.



4、袋式结构

4. Bag Type Structure

袋式包装结构一般采用布、塑料或纸等材料制作而成，多用于包装固体商品。

Bag packaging typically uses materials like cloth, plastic, or paper and is commonly used for solid goods.

容积较大的有布袋、麻袋、编织袋等；容积较小的有手提的塑料袋、纸袋等。

Larger volumes include cloth bags, burlap bags, and woven bags; smaller volumes include handheld plastic bags and paper bags.



5、盘式结构

5. Disc Structure



此类包装结构具有盘形的结构，大多数包装属于此种结构，它用途广泛，如食品点心、杂货、纺织品、成衣、礼品等等商品都可以采用这种包装结构。

This type of packaging features a disc-shaped structure. Most packaging falls into this category and is widely used for items such as snacks, groceries, textiles, clothing, and gifts.



6、套式结构

6. Sleeve Structure

此类结构一般采用布、塑料或纸为材料，多用于包装筒状、条状、片状等商品。

This structure typically uses materials like cloth, plastic, or paper and is often used for cylindrical, strip-like, or sheet-like products.

如伞套、领带套、光盘唱片、卷筒纸套等。

Examples include umbrella sleeves, tie sleeves, CD/DVD sleeves, and toilet paper sleeves.



7、管式结构 7. Tube Structure



此类结构一般由金属软管(如铅、铝、锡、PVC等)、塑料软管制作而成,以便使用时挤压,不少管式结构的封装盖采用特殊结构。

This type of packaging is generally made from metal (such as lead, aluminum, tin, PVC) or plastic tubes, which allow for easy squeezing. Many tube caps feature specialized designs.

此类包装在化妆品中经常使用到,它适合灌装液体、膏体等商品。

This type of packaging is frequently used in cosmetics and is ideal for filling liquids and creams.



8、篮式结构 8. Basket Structure

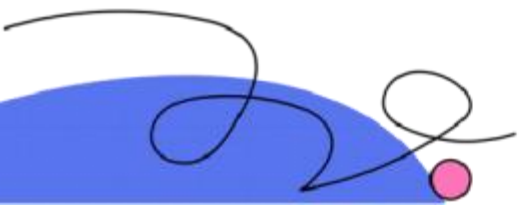
多用于包装综合性礼品。将一组礼品装在一个精心设计的篮子里，外面再用透明的塑料薄膜或玻璃纸加以包扎，形成一个丰富多彩的花篮，供送礼之用。

Often used for packaging assorted gifts. A set of gifts is placed in a meticulously designed basket, wrapped in transparent plastic film or cellophane, creating a colorful gift basket for presentation.



为了确保商品的质量和安
全，设计师需要根据商品的特
点和消费者需求，选择合适的
包装结构并进行合理设计。

To ensure the quality and safety of
the products, designers must
choose the appropriate packaging
structure based on the product's
characteristics and consumer needs.





感谢各位的观看
Thank you for
watching.

